

Ferrari 126 C2

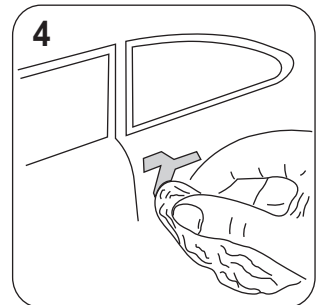
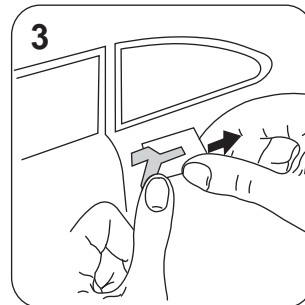
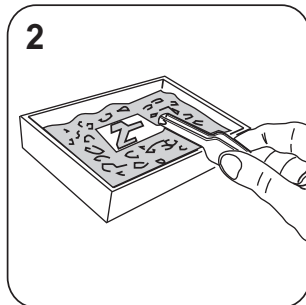
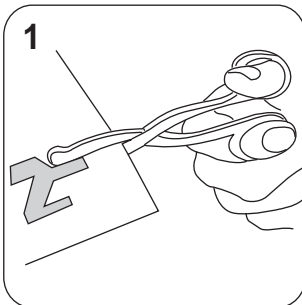
IMPORTANT:

Before beginning to assemble the model, carefully study the various assembly steps shown in the photograph.

- 1) Carefully check the parts to be assembled, cleaning them to remove any impurities, if necessary.
- 2) Check the fit of each piece before proceeding to its permanent assembly.
- 3) Any parts that are particularly difficult to reach once positioned, must be painted for worked before assembly.
- 4) Carefully follow the order of the assembly steps shown in the photograph.
- 5) Select alternative parts before assembling your preferred variant.

INSTRUCTIONS FOR CORRECTLY APPLYING THE DECALS

- 1) Carefully cut-out the selected object by following its outline.
- 2) Rest it on a sponge soaked with lukewarm water.
- 3) Slide the decal from the support paper to the surface where it must adhere.
- 4) Position the decal, dry the water residue with a soft cloth, removing any air bubbles.


INSTRUCTIONS FOR PAINTING PIECES:

- 1) Clean and degrease the parts with a suitable detergent (nitrocellulose thinner or similar)
- 2) Apply a primer coat before the original color.
- 3) In the case of white metal parts, we recommend that you brush or sand to obtain a realistic effect.
- 4) We recommend that you use products specifically designed for model-building, unless instructed otherwise.

COLOR LEGEND
a

MATT BLACK

b

SKY-BLUE

c

RED

d

SILVER

e

BURNISHED METAL

f

GREEN

g

GLOSS BLACK

h

GLOSS WHITE

i

MATT WHITE

l

YELLOW

SYMBOL LEGEND FOR ASSEMBLY

ATTENTION, PROCEED WITH CAUTION

ATTENTION, ASSEMBLE WITH CARE

GLUE WITH ADEQUATE GLUE

COLOR

COLOR TYPE

DECALS SLIDE OFF IN WATER

FALSE SCREW

PIERCE WITH SUITABLE POINT

PHOTOENGRAVING

FRAGILE PART, HANDLE WITH CARE

RIGHT PIECE

LEFT PIECE

CLEAN PIECES WELL WITH SUITABLE TOOLS

REPEAT 2-3-4-5-6 OR MORE TIMES

BAG NUMBER, FIND IT IN BOX

WELD WITH SUITABLE WELDER

DETACH CAREFULLY

TUBE

SUITABLE SCREW

SUITABLE NUT

POLISH

BEND

CUT

MOVABLE PART

CORRECT POSITIONING

ALTERNATE ASSEMBLY

FALSE NUT

TUBE JOINT

OVERLAP

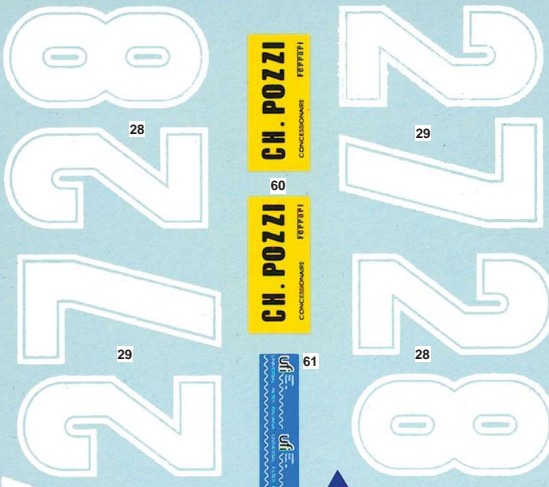
ADAPT

In the case where assembly is performed by a minor, we recommend adult supervision. This is due to the special care that a complex, craft product such as this requires and also due to the possible dangers of some equipment that are required for several assembly steps, all for the purpose of avoiding property damage and personal injury.

02



GOOD YEAR GOOD YEAR



Gilles Didier



D.Pirani Didier Gilles



D.Pirani

P.Tambay M.Andretti

P.Tambay M.Andretti

D.Pirani

